



RECESSED SPOTLIGHT 4.0197

EXTERIOR

IP67



- › High-quality spotlight for variable applications
- › Up to 1980 lumen light intensity
- › Surface temperature below 40°C (CoolContact)

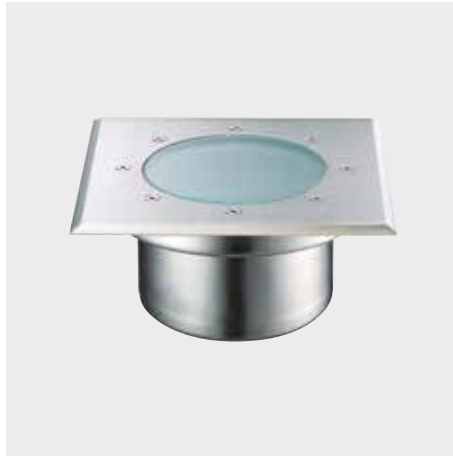
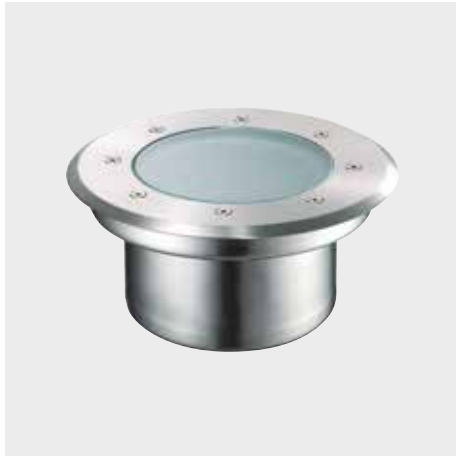




4.0197 | RECESSED SPOTLIGHT


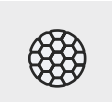

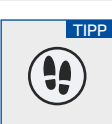
FOR ILLUMINATING BUILDINGS, FACADES, OUTDOOR FACILITIES AND TREES.

IP67	STAINLESS STEEL V4A 1.4571 316Ti	POW-LED INCL.	3.000 K 4.500 K 6.000 K	RGB	CONSTANT CURRENT CONSTANT VOLTAGE	DALI 1-10 V OPTIONAL DIMM	CABLE INCL.	1.5t	↑	↓	↔	↔	C*	CE
------	--	---------------	-------------------------------	-----	--------------------------------------	------------------------------	-------------	------	---	---	---	---	----	----



- Protection system IP67
- Entirely made of stainless steel 316Ti 1.4571
- Flush-mounted cover, round and square cover, height 5 mm
- ...
- operating mode: constant current
 - POW-LED cold white, warm white, neutral white, CC
 - POW-LED RGB
- operating mode: constant voltage
 - POW-LED cold white, warm white, neutral white, CV
- Rotation-symmetric light distribution
- ...
- Temperature-resistant silicon seal
- Toughened safety glass (ESG) – withstands loads of up to 1500 kg
- Cable gland PG13,5, nickel-plated brass

+ ADDITIONAL PARTS

- 
 Installation housing out of 316L stainless steel
4.0197.10.95
- 
 anti-glare louver
 black, for HIF-TC-CE
4.0003.01.01
- 
 glass disc, frosted
 for softer light distribution (light loss approx. -15%)
4.0066.01.00
- 
TIPP Anti-skid coating
4.0066.02.00

★ PRODUCT LINE

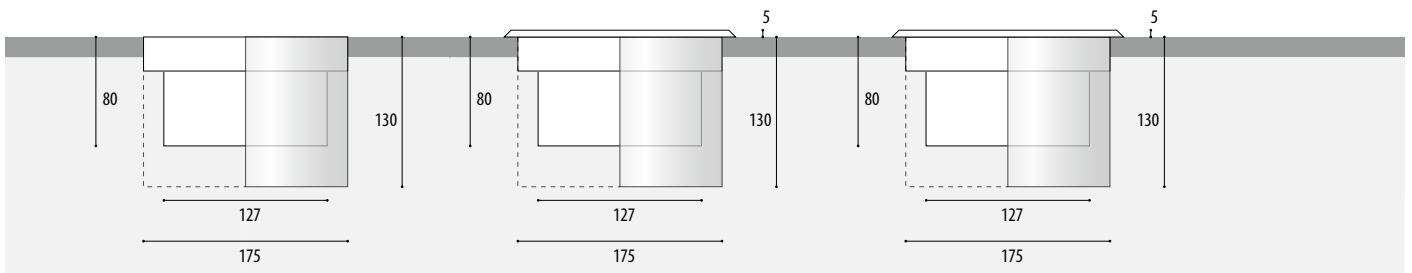
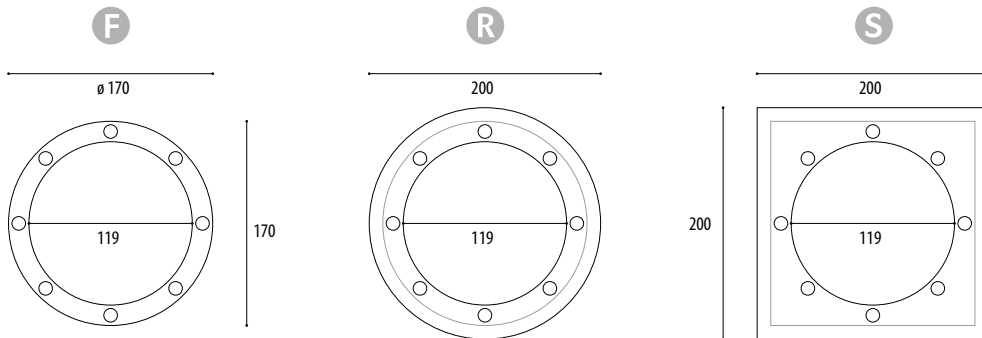
- 
4.0198
 Recessed spotlights (exterior)
 > Page 182
- 
4.0192
 Surface spotlights
 > Page 132
- 
4.0195
 Surface spotlights
 > Page 136



RECESSED SPOTLIGHT 4.0197

EXTERIOR

IP67



F	R	S	Article number	Article number	Article number	Lamps	Lumen	Light colour	Wattage	Current	Temperature	Radation angle	Cable, installs	[V]
POW-LED 350 MA, CLEAR TEMPERED GLASS LENS														
			4.0197.10.01	4.0197.20.01	4.0197.40.01	12 POW-LED	1980 lm	6000K cold white	total 15 W	CC 350 mA	<40°C	30° medium	UW, 2x1,5 qmm	V23
			4.0197.10.02	4.0197.20.02	4.0197.40.02	12 POW-LED	1620 lm	3000K warm white	total 15 W	CC 350 mA	<40°C	30° medium	UW, 2x1,5 qmm	
			4.0197.10.03	4.0197.20.03	4.0197.40.03	12 POW-LED	1860 lm	4500K neutral white	total 15 W	CC 350 mA	<40°C	30° medium	UW, 2x1,5 qmm	
			4.0197.10.09	4.0197.20.09	4.0197.40.09	12 POW-LED		RGB	all on 19 W	CC 350 mA	<40°C	30° medium	UW, 8x0,5 qmm	

POW-LED 12 V-DC, CLEAR TEMPERED GLASS LENS														
			4.0197.10.61	4.0197.20.61	4.0197.40.61	12 POW-LED	1980 lm	6000K cold white	total 15 W	CV 12 V-DC	<40°	30° medium	UW, 2x1,5 qmm	
			4.0197.10.62	4.0197.20.62	4.0197.40.62	12 POW-LED	1620 lm	3000K warm white	total 15 W	CV 12 V-DC	<40°	30° medium	UW, 2x1,5 qmm	
			4.0197.10.63	4.0197.20.63	4.0197.40.63	12 POW-LED	1860 lm	4500K neutral white	total 15 W	CV 12 V-DC	<40°	30° medium	UW, 2x1,5 qmm	



IP67

EXTERIOR



< Project
Roundabout, Leingarten, Germany

NOTE

In public areas we recommend to use a non-slip glass. See accessories.

POW-LED, series-connected at 350 mA

POW-LED in parallel connection at 12 V-DC

In case of use of an housing, cable gland must be mounted on the ground. (Please state!)

OPTIONS

Possible beam angle POW-LED



The installation housing can be supplied as an option (4.0197.10.95)

IP68 Protection system IP68 (fully ready for operation with light source and cables)

Matt glass lens for softer light distribution (light loss approx. -15%)

DALI 1-10 V OPTIONAL DIMM 12 V-DC dimmable with dimming module 5.0690.03.15. Note: Other cable to the spotlight is required. Requires further agreements.

Power supplies Technical details see from page 234.

5.0635.65.20	Constant Current power supply, max 1 spotlights	5.0635.00.36	Constant Current power supply, max 3 spotlights
5.0635.65.20		5.0635.00.36	
5.0635.65.20		5.0635.00.36	
5.0635.09.16	RGB-Controller, max 1 spotlights	5.0635.09.50	RGB-Controller, max 3 spotlights
5.0600.65.60	Constant Voltage power supply, max 3 spotlights	5.0600.65.15	Constant Voltage power supply, max 9 spotlights
5.0600.65.60		5.0600.65.15	
5.0600.65.60		5.0600.65.15	